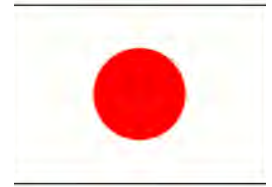




HANDOVER CEREMONY



DEPARTMENT OF RURAL
DEVELOPMENT,
MINISTRY OF AGRICULTURE,
LIVESTOCK AND IRRIGATION

THE PROVISION OF EQUIPMENT FOR
RURAL WATER SUPPLY PROJECT
IN THE CENTRAL DRY ZONE (PHASE 2)
THE REPUBLIC OF THE UNION OF MYANMAR



JAPAN INTERNATIONAL
COOPERATION AGENCY



13 JULY 2018
NYAUNG OO, MANDALAY

THE CONSULTANT

THE SUPPLIER



THE CONSORTIUM OF EARTH SYSTEM SCIENCE CO., LTD
AND ORIENTAL CONSULTANTS GLOBAL CO., LTD.



MARUBENI PROTECHS
CORPORATION

LIST OF EQUIPMENT PROCURED IN THE PROJECT

Item		Number
1. Truck-mounted Drilling Rig		
1-1	Drilling Rig ((drilling capacity: 250 m)	1 unit
1-2	Drilling Rig ((drilling capacity: 200 m)	1 unit
2. Air-lift Equipment		2 sets
3. Pumping Test Equipment		2 sets
4. Sand removing equipment		1 unit
5. Cargo truck with 5 ton Crane		2 units
6. Logging equipment		
6-1	Logging Equipment (400 m)	1 unit
6-2	Logging Equipment (300 m)	1 unit
7. Equipment and Materials for Pumping Facility Construction		
7-1	Generator	85 sets
7-2	Pumping System (Total Head 300m)	6 sets
7-3	Pumping System (Total Head 250m)	5 sets
7-4	Pumping System (Total Head 200m)	18 sets
7-5	Pumping System (Total Head 150m)	24 sets
7-6	Pumping System (Total Head 100m)	40 sets
7-7	Pumping System (Total Head 60m)	7 sets
8. Borehole Construction Materials and Tools		
8-1	Casing Pipe	3,756 pcs
8-2	Screen Pipe	288 pcs
8-3	Bentonite	191.6 tons
8-4	CMC	2,396 kg
8-5	Drilling bit	142 pcs
9. Spare Parts for the equipment		1 lot

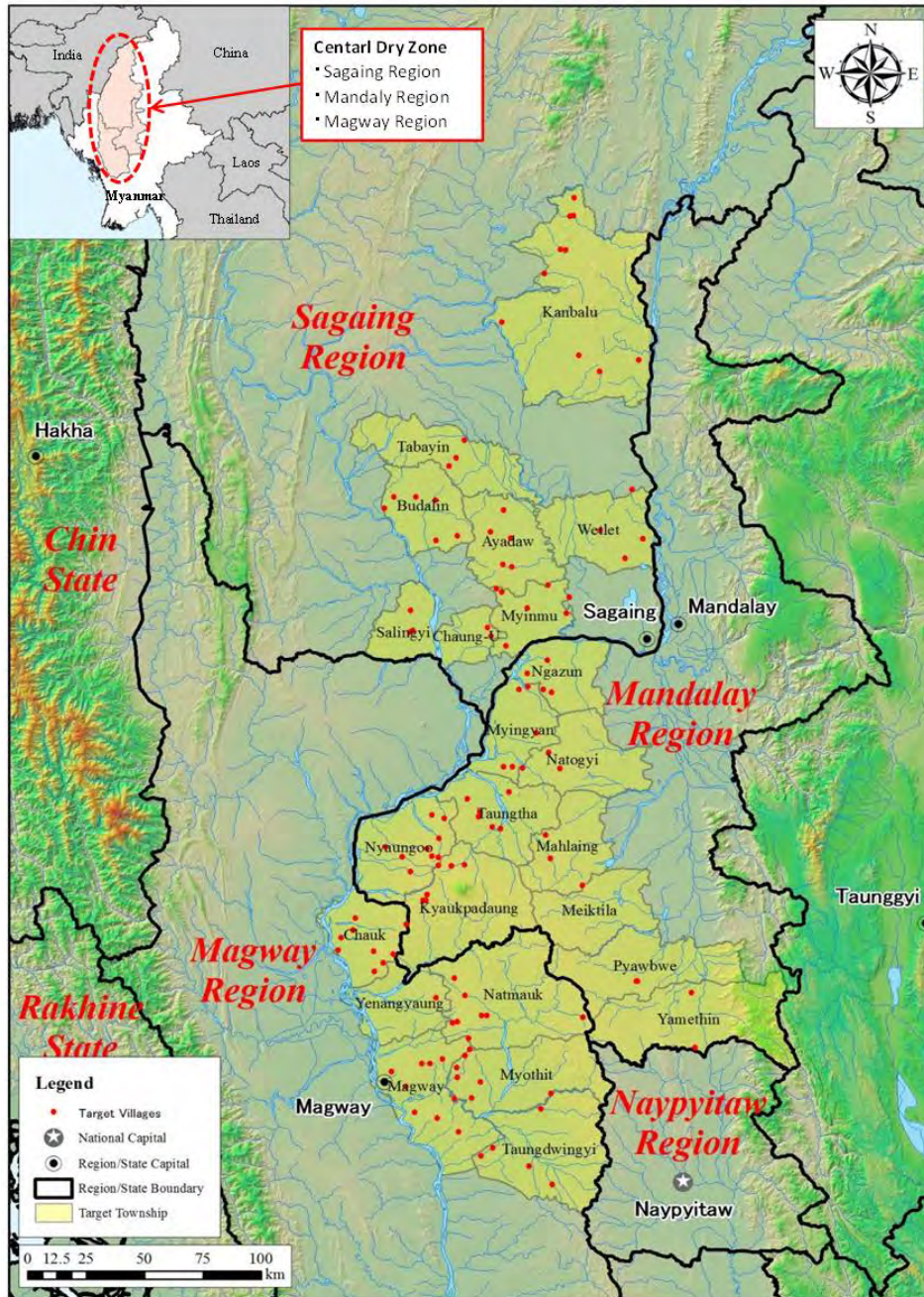
< Contribution of the Project >



Traditional Water Source



Improved Water Supply System



LOCATION MAP OF THE PROJECT SITES

Target Region: Magway, Mandalay and Sagaing Regions

<MANAGEMENT GUIDANCE (TECHNICAL TRANSFER)>



Training of Well Logging



Training of Pumping Test

<BACKGROUND OF THE PROJECT>

The Central Dry Zone (CDZ), the target area of the Project, is the dry area and surface water is not available in the dry season except for the Irrawaddy River. It is necessary to drill deep wells to get groundwater. For these reasons, many villages have no safe and sustainable water sources.

As a result of implementation of the Rural Water Supply 10-Year Plan (2000/2001-2010/2011) and the Rural Water Supply 5-Year Plan (2011/2012-2015-2016), although at least 1 water supply facility which supplied safe and sustainable water was constructed in 14,630 out of 16,341 villages in the CDZ, it is still an urgent issue to develop water sources in the remaining 1,711 villages. Many villages in the CDZ need deep wells of more than 200m. But, it was sometimes difficult to drill deep wells more than 200m deep by the DRD's drilling rig. Considering these situations, the government of Japan implemented the Project to provide two (2) drilling rigs (drilling capacity, more than 300m) and materials for drilling of deep wells in 100 villages.

<IMPLEMENTATION AGENCY OF THE PROJECT>

Department of Rural Development, Ministry of Agriculture, Livestock and Irrigation.

<ACTION PLAN (Period: 2017/18 – 2022/23)>

A total of 100 deep wells will be drilled for construction of new improved piped water supply systems in 5 years by using the Equipment provided by the Project.

Region	Magway	Mandalay	Sagaing	Total
Number of Target Village	35	31	34	100



Casing Pipe



Water Level Indicator



Cargo Truck with 5 ton Crane



Generator



Sand Removing Equipment



Compressor